

SEND COFFEE MORNING – 6TH OCTOBER

A poster for a 'Coffee morning' event. At the top right is the Martin High School logo, which includes a castle tower icon and the text 'MARTIN HIGH SCHOOL' and 'Lierkehart Educational Trust'. The main title 'Coffee morning' is written in a large, white, sans-serif font, with 'Coffee' in a smaller, cursive font above 'morning'. Below the title is a paragraph of text: 'Join us for our friendly and informal SEND Coffee Mornings a chance to connect, share experiences, and chat about the support available for your child.' At the bottom of the poster is a cartoon illustration of two coffee cups with faces. The cup on the left is yellow with a brown sleeve and a brown lid, and the cup on the right is orange with a brown lid. Both cups have large, expressive eyes and smiling mouths. The background of the poster is a light blue gradient.

Coffee morning

Join us for our friendly and informal SEND Coffee Mornings a chance to connect, share experiences, and chat about the support available for your child.



**PLEASE SCAN THE QR
CODE TO SUBMIT
YOUR QUESTIONS FOR
A Q&A TODAY WITH
OUR LEARNING
SUPPORT TEAM**

WE WILL START AT 9:15AM

SEND COFFEE MORNING – 6TH OCTOBER

9:00-9:15 WELCOME AND REFRESHMENTS



9:15-9:25 MEET THE TEAM

9:25-9:35 HOW CAN WE SUPPORT YOUR CHILD?

9:35-9:45 WHAT ARE WE WORKING ON THIS SCHOOL YEAR?

9:45-10:00 DISCUSSION AND FAREWELLS

SEND AT MHS THIS YEAR



Mrs Smith
Associate
Headteacher



Mr Seaward
Vice Principal



Mr Bray
SENDCO



Teachers



Form Tutors



Learning
Support Staff



Pastoral
Managers



PUPIL CENTRED, POSITIVE AND PROFESSIONAL

MR. RYAN BRAY – TEAM LEADER SENDCO



Completed the SENDCo qualification in 2021.

Previously worked in 3 primary schools.

Joined Martin High School from a Specialist SEMH school for learners with Autism, ADHD, Trauma, and Adverse Childhood Experiences (ACEs).

Used to be a pupil in 2007-2010 at MHS!

OUR LEARNING SUPPORT TEAM



Rohit Pabla, Arif Malek, Hanna Jarvis, Leigh-anne Whittamore, Amber Deaves, Dawn Merrifield

- Take groups for our Direct Instruction English and Maths catch-up programme.
- Update Provision Maps (the support) a learner receives on Beehive.
- Put in place additional support for in-classroom tasks for our learners e.g., overlays.

Carla Barnett, Leigh-anne Whittamore

- Put in place additional support from recommendations Autism Outreach advise us to.
- Put in place additional support from Educational Psychologists.
- Send surveys to teacher's and families to help us to understand our learners better.

Cognition and Learning Difficulties

- Specific Learning Difficulties (SPLD)
- *E.G. Dyslexia, Dyscalculia,*
- Moderate Learning Difficulties (MLD)
- Severe Learning Difficulties (SLD)
- Profound and Multiple Learning Difficulty (PMLD)

Social, Emotional and/or Mental Needs

- Depression
- Attention Deficit Hyperactivity Disorder (ADHD)
- Eating Disorders
- Anxiety Disorders
- Mental Health Issues
- Social Disorders

Communication and Interaction Needs

- Speech, Language and Communication Needs (SLCN)
- Autistic Spectrum Disorder (ASD)

Sensory and/or Physical Needs

- Visual Impairment (VI)
- Hearing Impairment (HI)
- Multi-Sensory Impairment (MSI)
- Physical Disability (PD)

Lucy Barnard, Amy Tanner, Jo Deez

- Take groups and 1-1 ELSA sessions.
- Deliver bespoke emotion coaching sessions.
- Send surveys and information leaflets to teacher's and families to help us to understand our learners better.

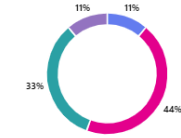
Amy Tanner, Carla Barnett

- Work with the SENDCO to review the School Accessibility Plan.

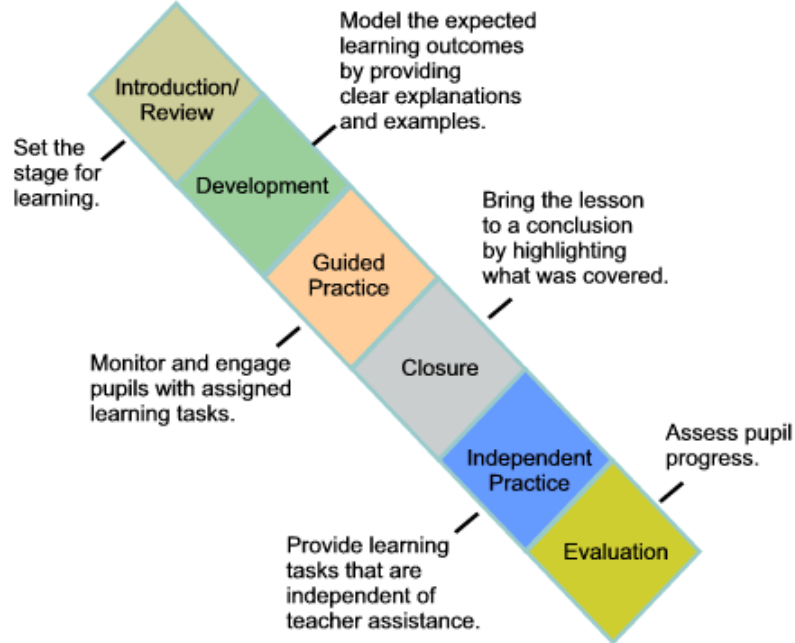
HOW CAN WE SUPPORT YOUR CHILD?

6. How confident do you feel in understanding the support systems available for your child at school? (0 point) [More details](#)

- Extremely confident 1
- Somewhat confident 4
- Somewhat not confident 3
- Extremely not confident 1



Direct Instruction



5	I AM GOING TO EXPLODE!!!
4	I AM GETTING ANGRY
3	I AM A LITTLE NERVOUS
2	FEELING OK
1	CALM AND RELAXED

What is an ELSA

An ELSA is a specialist teaching assistant with a wealth of experience of working with children. ELSAs are trained and regularly supervised by the Educational Psychologists in your Local education authority. An ELSA is a warm and caring person who wants to help your child feel happy in school and to reach their potential educationally. Their aim is to remove the barriers to learning and to have happy children in school and at home.

Please do talk to the ELSA in your school if you have any problems with your child.

ELSAs can help with

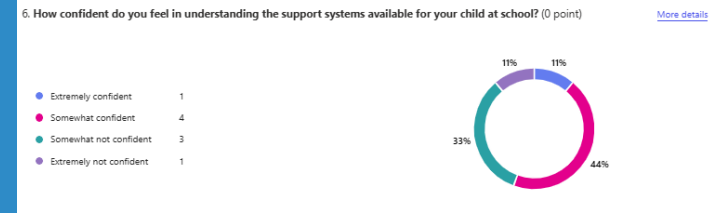
- Loss and bereavement
- Self-esteem
- Social skills
- Emotions
- Friendship issues
- Relationships
- Anger management
- Behaviour
- Anxiety
- Bullying
- Conflict
- Relaxation techniques

www.elsa-support.co.uk

ELSA

Emotional
Literacy
Support
Assistant

HOW CAN WE SUPPORT YOUR CHILD?



Details	
Key Information	<ul style="list-style-type: none">Restorative practices must be used instead of regular sanctions.If there is a seating plan, please talk to me before hand as this works bestTo help understand ADHD and PDA as a teacher there is one thing to remember, does not choose to be this way, it is not about bad behaviour and it is not about making poor choices it is the way brain works.Positive reinforcement, giving choices, avoiding power struggles, and using visual aids are all effective strategies for disciplining a child with PDA.<ul style="list-style-type: none">Triggers:<ul style="list-style-type: none">Shouting at meTelling the whole class I need to reset or go to the hubInjustice being blamed for thingsIsolating me away from people I know
Important to me	<ul style="list-style-type: none">I have a hub reset should I need to use it give me a chance before asking On Call to support me walking to there, I should try to return to lessons after 5 minutes.I often laugh as a defence mechanism when I do not know how to regulate in a situationI take medication for my ADHDIf I need refocusing come and have a chat with me, don't shout at me.Give me a chance to explain how I feel because I do not react well to not being able to talk
Provision required and support strategies	<ul style="list-style-type: none">Give me some thinking time if I am unregulated, I will not want to speak straightaway, but follow up on this or speak to my mum because can helpHave task visibleRepeat things where possible to help with memory
Strategies I use to support my own learning	<p>I will go to the HUB for a reset when I feel this is needed</p> <p>How will help herself</p> <ul style="list-style-type: none">Go to the hubTalk with the pastoral team if feeling overwhelmed
Additional Information	
Attachments	
Annotations	

Teachers are expected to read our Pupil Passports.

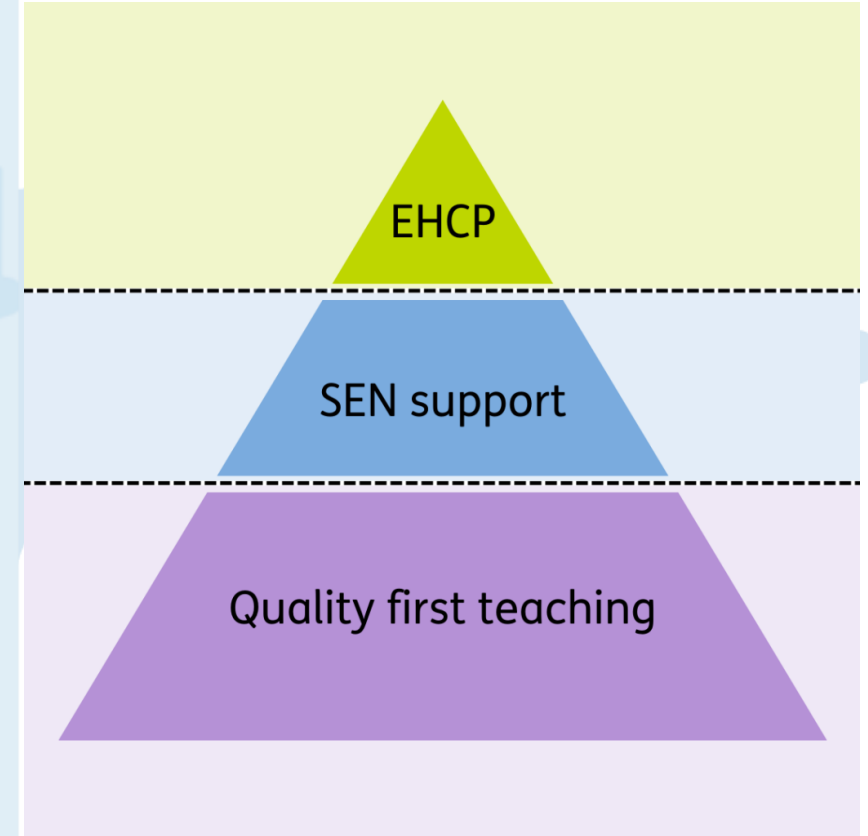
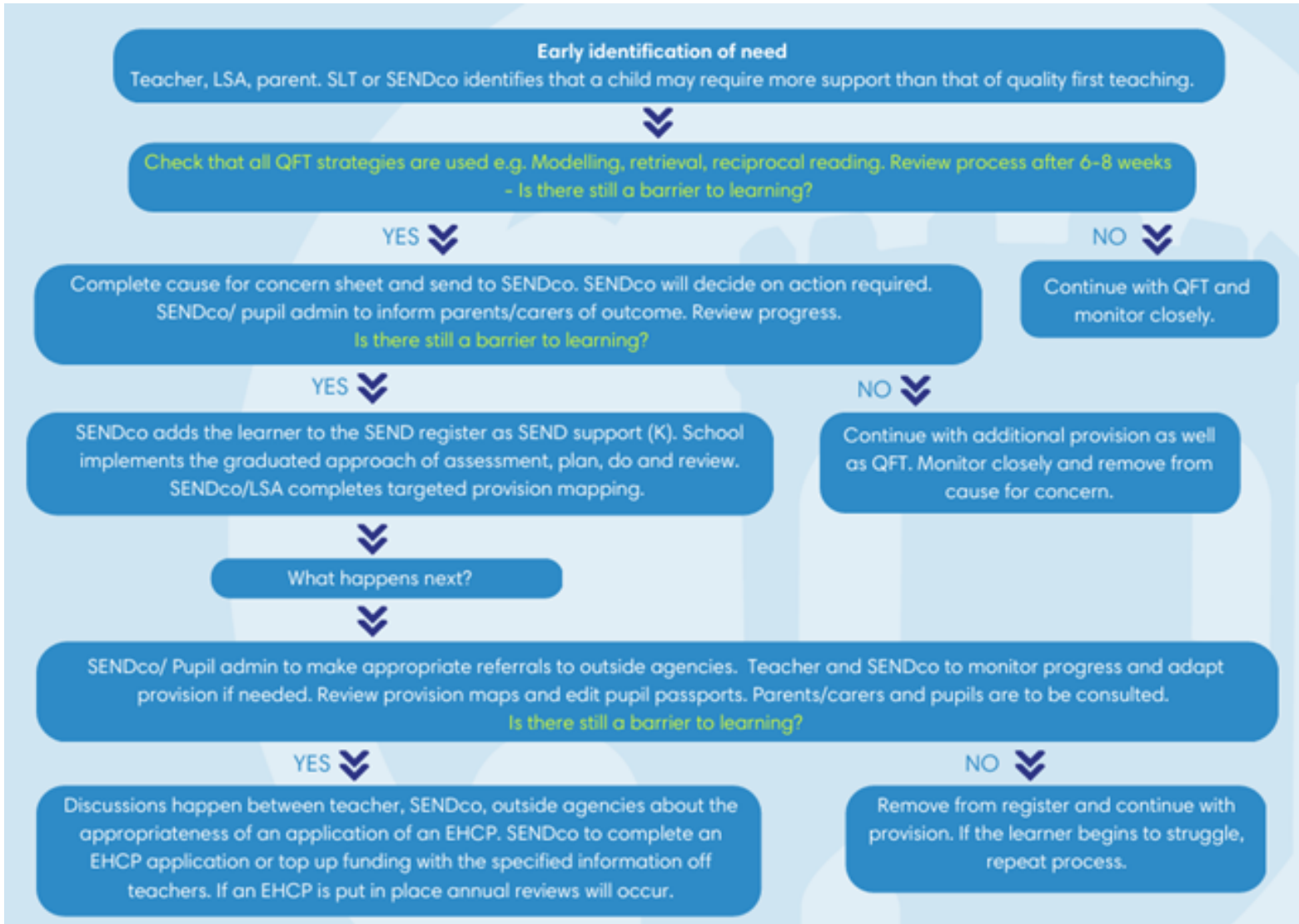
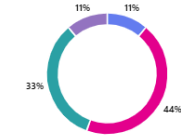
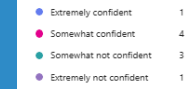
These are shared with you at home through your Beehive app.

If you want them amending, discuss this with the SENDCo.

Question your child's teachers at APE Meetings to see how well they understand their pupil passport.

HOW DO WE IDENTIFY AND ASSESS IF YOUR CHILD HAS A SPECIAL EDUCATIONAL NEED?

6. How confident do you feel in understanding the support systems available for your child at school? (0 point) [More details](#)



WHAT ARE WE WORKING ON THIS SCHOOL YEAR?



1. To design and implement whole-school systems that improve the quality and impact of SEND provision.
2. To refine systems of support staff deployment and teaching and learning interventions.
3. To develop and embed meaningful systems for parental involvement in SEND provision ensuring feedback can be used to improve provision and strengthens home-school collaboration.

WHAT ARE WE WORKING ON THIS SCHOOL YEAR?



1. To design and implement whole-school **systems that improve** the quality and impact of **SEND provision**.
2. To refine systems of **support staff deployment and teaching and learning** interventions.
3. To develop and embed meaningful **systems** for parental involvement in SEND provision ensuring feedback can be used to improve provision and strengthens home-school collaboration.



Systems that improve SEND provision, support staff deployment and teaching and learning.



Systems that improve SEND provision, support staff deployment, and teaching and learning.

A VIDEO SHARED ON AT OUR AUGUST STAFF TRAINING DAY



**WINNER OF THE
DIVERSITY IN
ADVERTISING
AWARD**



PUPIL CENTRED, POSITIVE AND PROFESSIONAL

WHAT SHOULD SEND SUPPORT LOOK LIKE AT THE MARTIN HIGH SCHOOL?



Scan the QR code.

Write one word for your answer.

As many goes as you want.

What should our support look like for our learners?



WHAT SHOULD SEND SUPPORT LOOK LIKE AT THE MARTIN HIGH SCHOOL?



What should our support look like for our learners?



PUPIL CENTRED, POSITIVE AND PROFESSIONAL

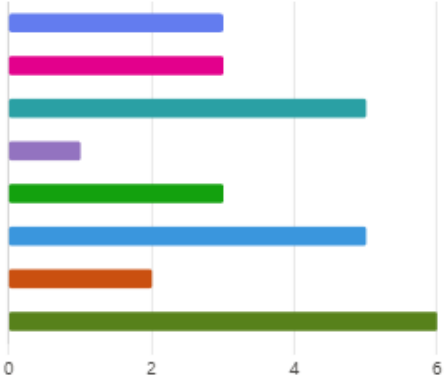
Q&A WITH THE LEARNING SUPPORT TEAM



8. What types of sessions would you find most useful throughout the year? (Select all that apply) (0 point)

[More details](#)

- Understanding EHCPs and the referral process 3
- Supporting learning and revision at home 3
- Managing anxiety and emotional wellbeing 5
- Working with external professionals (e.g. CAMHS, EP, SALT) 1
- Building independence and life skills 3
- Navigating transitions and preparing for adulthood 5
- Parent-to-parent support and networking 2
- Q&A with the SENDCo and support team 6





 **Food & Drink Contributions**

 **Emailing Suggested Topics or Guest Speakers from School or Externally**

 **Offering To Lead a Short Talk or Activity**

 **Local Service Recommendations, if you know anyone who can support our school or your child**

 **Completing a Short Feedback Form on Today**

IF YOU HAVE ANY CONCERNS



- In the first instance, talk to your child's Form Tutor, copy into your email the Key Stage Pastoral Manager, and Head of Year.
- If after a week, it remains unresolved, contact the Head of Key Stage and SENDCo.
- If you wish to make a meeting with the SENDCo, please fill out the appointment booking form. (see QR Code).



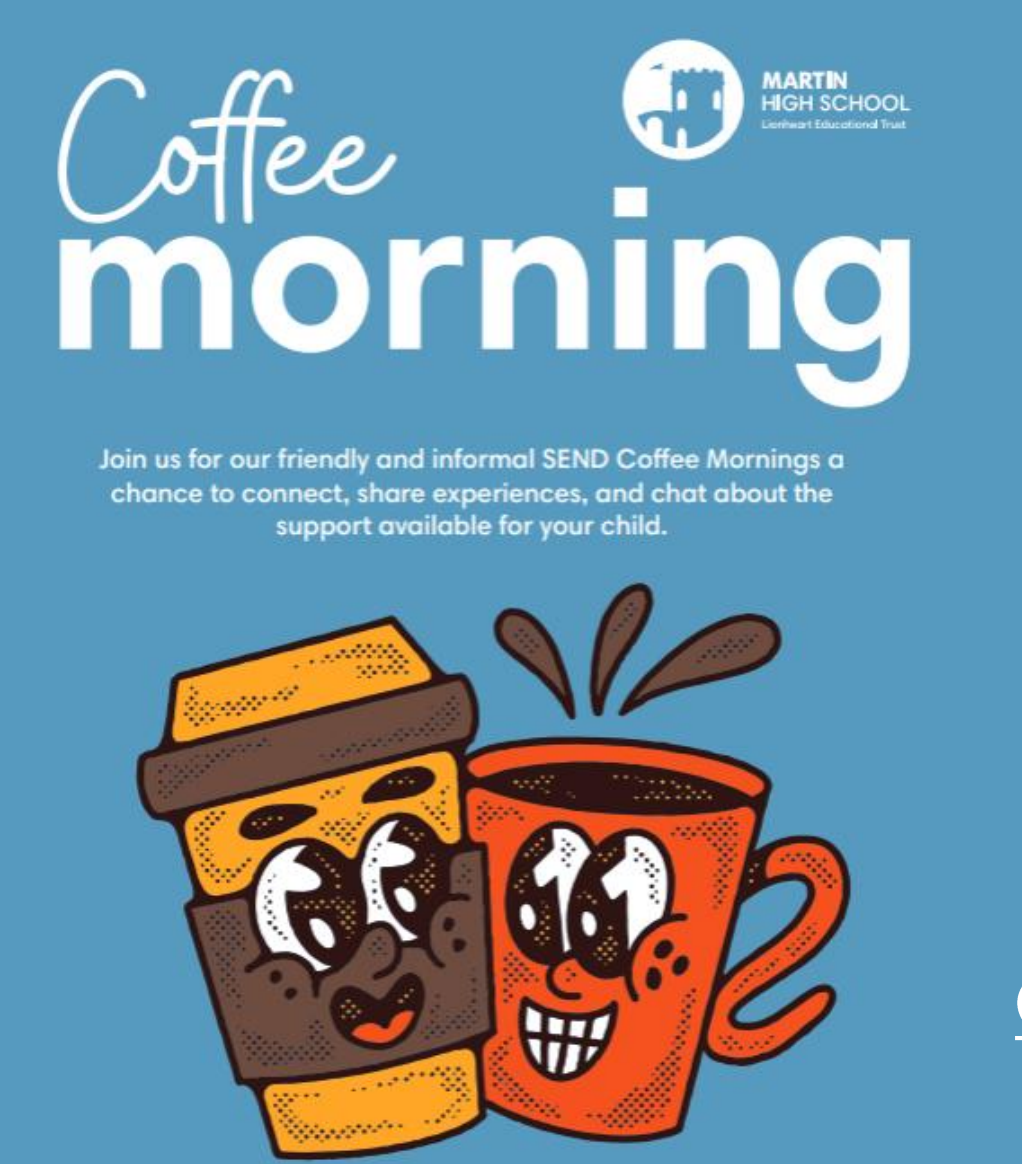
IF YOU NEED ANY MORE HELP



SENDIASS

What is this for and who is this for?	Special Educational Needs and Disability Information, Advice and Support Service (SENDIASS) Leicestershire, is a statutory service, who provide free, impartial and confidential advice and support to parents and carers of young people aged 0-25 with special education needs or disabilities as well as young people themselves. They advise on all matters relating to SEND, including education, health and social care issues.
Where do I find this?	SENDIASS Information SENDIASS Website
When should I access this?	You can access SENDIASS for support with any SEND education, health and social care issues, including: <ul style="list-style-type: none">• SEND processes and Send support• Educational disputes and exclusions.• One Page Profiles.• Requests for assessments and matters relating to Education, Health and Care Plans (EHCPs).• Annual reviews of your child's EHCP.• Disability discrimination.• Support in court proceedings, relating to the above.
How do I use this?	SEND Information Advice and Support Service (SENDIASS Leicestershire) Telephone: 0116 305 5614 Duty line opening times Monday-Friday 9am-3pm - answerphone service in operation outside of these hours Email: info@sendiassleicestershire.org.uk
Is this free to me or a costed service?	It is a free service.


THANK YOU FOR COMING!



Coffee
morning

MARTIN
HIGH SCHOOL
Lerthwaht Educational Trust

Join us for our friendly and informal SEND Coffee Mornings a chance to connect, share experiences, and chat about the support available for your child.



☕ SEND Coffee Morning – Parent Feedback Form



OUR NEXT COFFEE MORNING
IS ON THE 1ST DECEMBER