



# **MARTIN HIGH SCHOOL**

Lionheart Educational Trust



## **Newsletter June 2022**

## MESSAGE FROM THE HEADTEACHER



**JCQ** **Student guide to this year's package of support**

JCQ, Exam Boards, the Department for Education and Ofqual recognise the challenges that you and your teachers have faced and overcome during the pandemic. To help ensure you are treated as fairly as possible in your exams when compared to pre-pandemic years, we have developed an exceptional package of support.

Measures Already in Place	Upcoming Measures
<b>Advance information</b> Exam boards have provided information on the focus of exams for most subjects to help you revise. <i>However, some subjects where you have optional content or extra topics must have provided information.</i>	<b>Supporting materials</b> You will receive formulae and equation sheets in some exams, including GCSE Maths, Physics and Combined Science exams.
<b>Optional content</b> There has been less content or fewer topics for you to learn in some GCSE subjects. This has been agreed to: • GCSE English Literature • GCSE History • GCSE Ancient History • GCSE Geography	<b>Generous grading</b> Exams will be graded more generously this year compared to 2019, when summer exams last took place.
<b>Changes to coursework</b> Non-exam assessment, practical work and coursework requirements have been reduced, with flexibility in exam subjects.	<b>Additional support</b> Your teachers will have worked with you on the measures already in place. If you have any questions on the upcoming measures, please ask your teacher and you can find out more by checking the relevant exam boards' websites.  Please bear in mind that you should still revise the whole course. This package is designed to support you to reach your full potential and progress onto further education, higher education or your chosen careers.

For tips on preparing for exams, please visit [ofqual.gov.uk](http://ofqual.gov.uk).  
This package of support is designed to support pupils studying GCSE, A-level and A-level courses.

2020 SUMMER EXAM BOARD

Welcome to our latest newsletter. I am going to start by wishing good luck to our Year 11 students that are deep in the middle of their GCSE exams. They are the first learners for three years to sit a proper exam series and after all of the trials over the last couple of years, we hope everything goes well for them. I am not forgetting our Year 10 learners who will also be completing their early entry qualifications. Good luck to them as well.

The latest news on our site development is that the sports hall is due for completion on the 10th June so we look forward to using that shortly after half term. Work will start on the removal of the mobile classrooms on the 23rd May and the new Humanities building is due to be ready in September. This will provide much needed extra classrooms for our growing number of learners. It is an exciting time for Martin High.

Phil Cooling

## IN THIS ISSUE

- [Events](#)
- [Trips](#)
- [After School Clubs/Activities](#)

- [Competitions and Challenges](#)

- [Other News](#)

- [Reminders](#)

- [Contact Us](#)

---



## EVENTS

### STEM - Autonomous Vehicle Day



With driverless cars now becoming a reality after once being consigned to the pages of science - fiction, the world needs a new wave of engineers and programmers to design, build and programme the next generation of autonomous vehicles. Our learners at The Martin High School did just that using in this challenge, Lego Mindstorms and iPads to build and programme their own vehicles which

they navigated around a city (road map) without any human interaction. They also programmed their vehicles to react to emergencies and avoid pedestrians.

They worked as a part of the team, communicating, negotiating, being innovative, adaptable to the new learning experience, meeting to their deadlines and presenting their work to their peers. The learners were engaged throughout the day and have made us very proud.





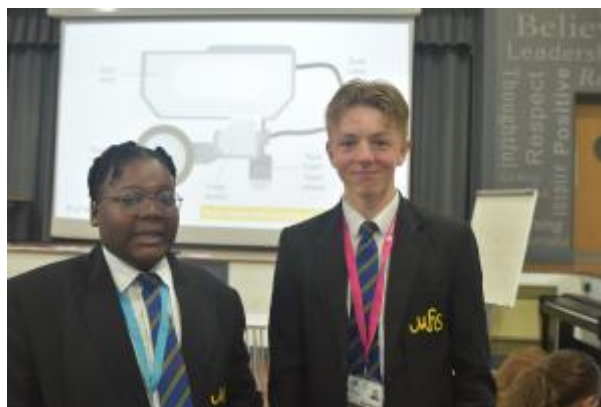


















### Year 9 & 10, and KS3 Music IT whizz kids (12/05/22)



On Thursday 12th May, 30 pupils took part in the Leicester MusicIT Composition Workshop at the BIG Shed in Leicester. What a fabulous day we had! Pupils got to experience recording, rap, turntablism, singing and learnt how to manipulate recordings using IT to create a piece of music.

They also worked with players from The Philharmonia Orchestra, who were incredibly impressed by our learners and have asked to work with Martin High specifically throughout the next academic year – amazing opportunity!

Everything the pupils composed and recorded will be used in a composition by Elizabeth Kelly to be released in December 2022. As soon as we have more details about this, we'll be sure to let you know so that you can hear the final cut!









## TRIPS

### School Games Paralympic Festival



MHS Talent Academy were out earlier in the term leading a School Games Paralympic Festival, at Loughborough University.

We are beyond proud of how these individuals coached and supported the student athletes taking part. Incredible feedback given by the organisers and schools participating.



Leaders were involved with a multi sport event including wheelchair basketball, judo, badminton and inclusive sports. As well as being the event mascots, great job to **Harry** and **Chloe** for stepping up. Well done to **Ollie B** and **Hannah**, who both went above and beyond- their enthusiasm was described as infectious, which inspired the students they were working with.

Lots of confidence gained and memories made. We're looking forward to the next event!









## Tennis Event



The Talent Academy were back in action at Gynsil Lane Tennis Club, leading a Year 3 tennis event.

They delivered each station excellently and as always, very encouraging with the participants. They received high praise from the tennis coaches, members of staff and event organisers for their brilliant leadership and coaching skills.

We could not be prouder!



## AFTER SCHOOL CLUBS/ACTIVITIES

### Garden and Eco Club



*1 - **Eco Club** have been very busy again this term.*

*We are continuing to clear the woods of the dumped rubbish with a view to holding a Teddy-Bear's picnic for Eco Club in the penultimate week of term. We would love any donations of litter picking equipment to help us in our endeavours.*





*2 - We have been building hedgehog feeding stations and have had some of them already occupied by hedgehogs.*



*3 - We have had a donation of tadpoles from Mrs Mansell to keep in the lab and watch develop.*

*Eco club members will be eligible to go on the forthcoming Year 7 trip to Twycross Zoo.*



*4 - **Garden Club** are very grateful for the donations of seeds, pots and compost received. It means we have lots of seedlings on the go. More donations, especially of garden tools and compost are very welcome.*

## Sports



*5 - Our Year 9 boys badminton team were out representing MHS at the county round.*

*Some really high quality games being played throughout the tournament.*

*Star performance goes to **Dexter** for his incredible smash shot technique.*

*The team performed really well and placed **5th** in Leicestershire.*



*6 - Our Year 8/9 Girls Football Team travelled to Crown Hills Community College for the indoor Futsal finals.*

*They finished the group stages on 7 points, finishing joint 2nd but narrowly missing out on a semi final place by 1 goal difference.*

*They've made us extremely proud with their efforts and represented MHS superbly.*

*Star of the tournament **Liv H.***

## Music



### Musical Instrument Lessons

Here at Martin High School, we recognise the importance that learning to play a musical instrument can have on a young adult. Music is one of life's joys and a great gift. It can enrich lives and open doors to a fabulous range of careers. Giving your child instrumental lessons can have a huge impact, not only in terms of them being able to play a musical instrument, but also in their general well-being, for example:

- Personal Development in Confidence
- Communication
- Social skills
- Academic Development Concentration
- Learning & processing information
- Brain Development



- Improved motor skills & brain function

We therefore encourage as many pupils as possible to start and learn a musical instrument.

#### Instruments on offer:

Guitar, piano, singing, oboe, drum kit, violin, viola, cello, saxophone, trumpet, trombone, French horn, tuba, clarinet and bassoon.

If you are interested in booking lessons for your child, please ask your child to pop and get a booking lessons letter from me when they are next in school, they can find me in MU1.

Thanks!

Mrs Shaw



## Creative arts

We have a range of lunch and after school clubs on offer in all three subject areas – Drama, Art and Music. Please check out the posters below to find out what is on when every week.

Team MAD Extracurricular Activities		
There is a wide variety of clubs on offer, a look and see if there is anything you might like to join!		
Day/Time WEEK 1	Lunch 12.30-1.00	After School 3.05-4.15
<b>Monday</b>	Music IT & Beatboxing Club – iMac Room	No Clubs – Staff Meetings
<b>Tuesday</b>	MHS Guitar Ensemble – MU1	Summer Showcase Rehearsals Main Hall 3.05 – 4.30
<b>Wednesday</b>	MHS Vocals – MU1	No Clubs – Staff Meetings
<b>Thursday</b>	Beatboxing Club – iMac Room Art Club – Art 2	MHS Sinfonia – MU1
<b>Friday</b>	Keyboard Club – MU1 Glee Club – Drama 1	No Clubs
<b>Art Activities</b> Wednesday Webinars 3.00-4.15		

Team MAD Extracurricular Activities		
There is a wide variety of clubs on offer, a look and see if there is anything you might like to join!		
Day/Time WEEK2	Lunch 12.30-1.00	After School 3.05-4.15
Monday	Music IT & Beatboxing Club – iMac Room	No Clubs – Staff Meetings
Tuesday	MHS Guitar Ensemble – MU1	Summer Showcase Rehearsals Main Hall 3.05 – 4.30
Wednesday	MHS Vocals – MU1	No Clubs – Staff Meetings
Thursday	Beatboxing Club – iMac Room Art Club – Art 2	MHS Sinfonia – MU1
Friday	Keyboard Club – MU1 Glee Club – Drama 1	No Clubs
Art Activities Wednesday Webinars 3.00-4.15		

## COMPETITIONS AND CHALLENGES

### Queen Mother's Handwriting Awards 2022

Earlier in the Spring term all KS3 students were given the chance to enter this prestigious competition which judges the best handwriting in the East Midlands. All students were entered into 'Class 3' and copied out in their neatest handwriting the witches spell from Shakespeare's Macbeth. It took resilience and determination with many students having a third, fourth or even fifth go to get their entry perfect.

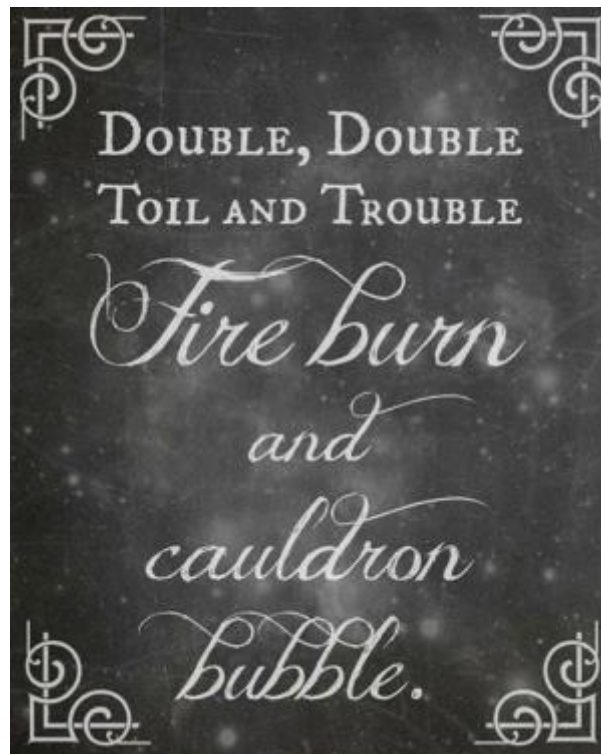
We are incredibly pleased to announce that students from MHS have taken **1st**, **2nd** and **3rd** place in the competition! Students will receive a certificate to commemorate their achievement, an invitation to the Food and Farming Festival and **1st** place also receives a cross pen engraved with their name.

A huge well done to:

1st - **Adrian** in 9T

2nd - **Yang** in 8R

3rd - **Harley** in 7T



## Poetry by Heart



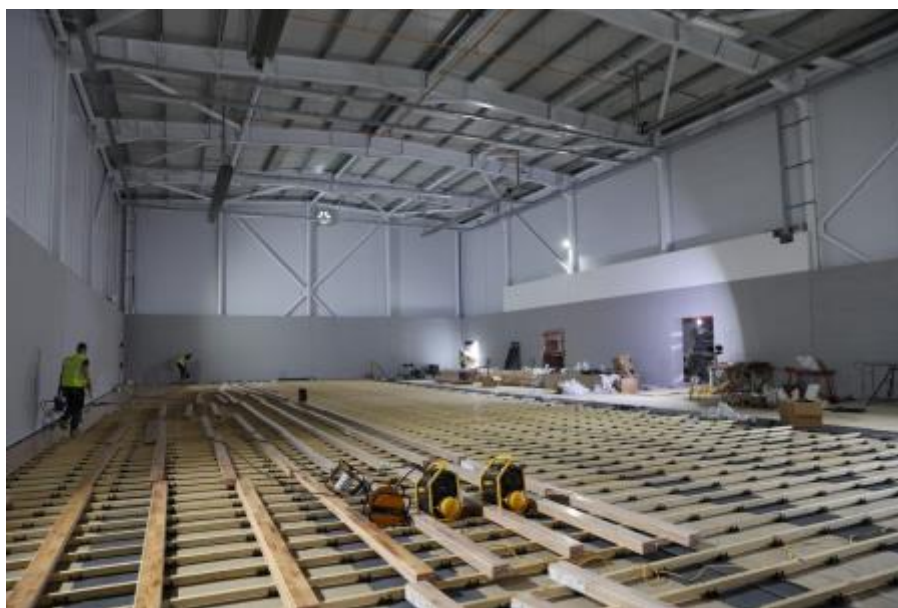
We had students from both KS3 and KS4 entering the National 'Poetry by Heart' Competition. Of the 8 students who participated, we achieved 5 'Commendations' and **Dianna D**, who submitted her own composition, was awarded a 'Highly Commended'. The judges said of Jack C's self-penned poem "we really enjoyed this witty yet moving performance, well done". **Abigael A, Lina J, Elsha M** and **Niva S** recited 'Invictus' as a team entry which prompted the judges to comment "a fluent group delivery in perfect synch!" The judges also had kind words to say about the stunning performances from **Jonah R** and **Jacob P**. We hope to have even more participants for next year's competition!

## Library



## OTHER NEWS

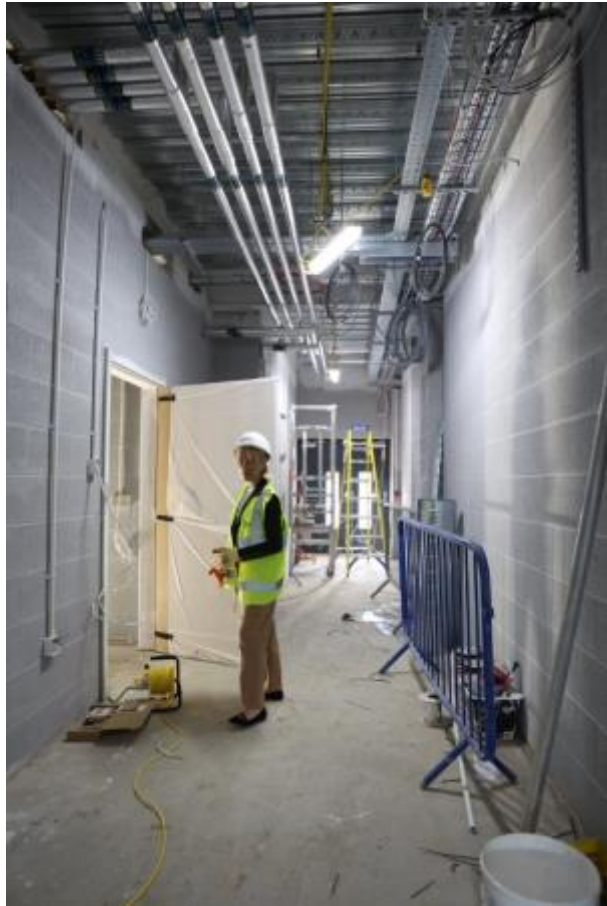
### Sports Hall Update



We are thrilled with the excellent progress our new sportshall is making. We are extremely hopeful the project will be completed after half term and we will be delighted to start teaching our PE lessons in our state of the art facility before the end of the academic year.

Martin High PE department.



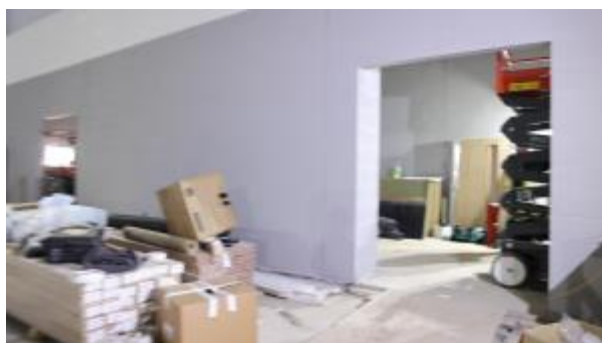












<https://sway.office.com/IERplixGGG1QWCEJ#content=2MMegbwswhA3tk>

## Eclipse Festival



<https://sway.office.com/IERplixGGG1QWCEJ#content=5AWSAz5CYcB5US>

7 - A little message from one of the performing acts "He Knows, She Knows"

Just over a month to go until Eclipse. We are really looking forward to what promises to be a fantastic festival. We hope to see all of our learners taking part in the amazing range of activities that will be taking place on the field and enjoying the variety of music that will be on offer. Some of the activities that will be on offer are zorbing, fair rides and multiple inflatables. There will be karaoke, alpacas, reptiles and the emergency services will also be bringing their vehicles. The National Space Centre will be attending and bands on stage include He Knows She Knows, DJ Hammond and The Atomics. There will be a number of competitions and prizes will be available to be won!

Tickets are still available to buy on Beehive at £20.

## Summer Showcase 2022



*8 - Yes! You heard it right! Our first live performance in three years! Don't miss it!*

*Date: Thursday 7th July 2022*

*Time: 6.00pm-8.00pm*

*Tickets: £3.00 and will be available on Beehive from Monday 13th June*

## Congratulations

Massive well done to **Grace D 10A** on passing her Grade 5 Music Theory exam with distinction - fantastic result! Well done Grace!

## Science



*9 - The Science department have been making the most of the great weather and holding lessons outside. Year 7's are modelling chemical reactions and the Year 9's are measuring the kinetic energy of a ball as part of their Physics GCSE.*



*10 - The Science Department will be inviting all of **Year 7** to Twycross Zoo on July 1st. This is one of the trips that got cancelled two years ago due to Covid. Letters will be coming out shortly.*

## Live Cricket



As we start our exclusive partnership with Leicestershire County Cricket Club we wanted to share this exciting opportunity for our learners and families to experience live cricket at Leicester's Uptonsteel cricket ground during the summer holidays!

[Tickets](#)

## REMINDERS



- **Parking on site** - On site parking is allocated for staff and visitors only. We ask that parents only park on site if they have scheduled meetings, or if they are collecting a student who is unwell/going for an appointment etc. Drop offs following appointments etc are authorised too. There are allocated disabled bays near main reception for those with the relevant disabled badges should you have need of them.
- **Visitors** - If you need to visit the school but don't have a scheduled meeting we ask that you please contact the school via phone or email to arrange this. It is very important that from a safeguarding perspective we know who to expect on site each day. By doing this we can also ensure that your visit runs smoothly and efficiently.

When visiting the school please ensure you are entering via the visitors entrance only.

- **Beehive orders and where to collect** -

Ties and Lanyards: Collect from the Main office or Form Tutors will hand out. (Pupil Premium uniform orders are delivered to the Main office).

Revision books: Collect from the Exams office

Stationary: Collect from the Library

- **Bringing items into school** - If you need to bring items into the school that are to be passed to your child we ask that you limit these to essential items only. Please also make sure any items are clearly labelled with the child's name and form group.
- **Sanctions** -

C1: Three C1's = 1 hour detention

C2: 1 hour detention

C3: 2 hour detention or internal exclusion depending on reason for sanction

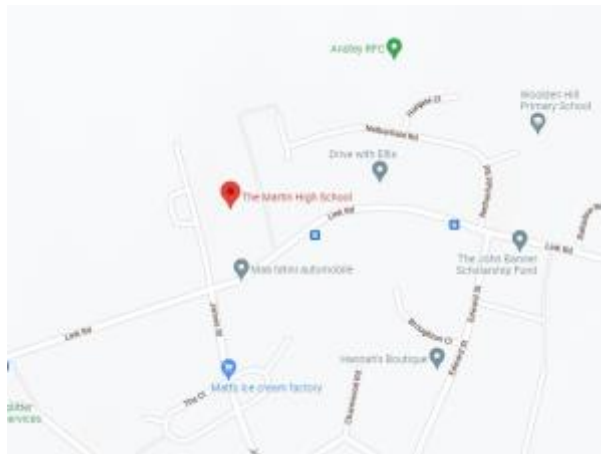
\*If the student fails to attend their detention without good reason, it will carry over to the next day and the time will be doubled. Two missed detentions in a row will result in a day in internal exclusion.

- **Office opening hours** - The front office is open from 8.30am -4pm Monday to Thursday, and 8.30am-3.30pm on Friday's. Parents with scheduled meetings after the office closing time will be met by the member of staff who has arranged it. If your child has had an item confiscated during the school day it can only be collected during office opening hours. Any items not collected on the same day will be locked away safely overnight.





## CONTACT US



Please find below some useful contact information should you need to get in touch with the school

### **Martin High School**

Link Road

Anstey, Leicestershire, LE7 7EB

0116 236 3291

**Lead DSL**- Zoe Meadowcroft [zoe.meadowcroft@martinhigh.org.uk](mailto:zoe.meadowcroft@martinhigh.org.uk)

**Executive Head** - Laura Sanchez [laura.sanchez@lionhearttrust.org.uk](mailto:laura.sanchez@lionhearttrust.org.uk)

**Associate Head** - Phil Cooling [phil.cooling@martinhigh.org.uk](mailto:phil.cooling@martinhigh.org.uk)

**Deputy DSL** - Thomas Fitzjohn: [Thomas.Fitzjohn@lionhearttrust.org.uk](mailto:Thomas.Fitzjohn@lionhearttrust.org.uk)

**Absences:** [absence@martinhigh.org.uk](mailto:absence@martinhigh.org.uk)

For Data Requests please contact: [dpo@lionhearttrust.org.uk](mailto:dpo@lionhearttrust.org.uk)

For Freedom of Information Requests please contact: [foia@lionhearttrust.org.uk](mailto:foia@lionhearttrust.org.uk)

For more information on Subject Access Requests [please click here](#)

Visit us on the web at [www.martinhigh.org.uk](http://www.martinhigh.org.uk)